

GXR-E40S PLUS

Diagnostic X-ray System

*Space-saving, competitively priced,
and high-quality*



GXR-E40S PLUS

Diagnostic X-ray System

The GXR-E40S PLUS, a compact diagnostic X-ray system with an integrated generator located beneath the patient table, seamlessly blends into a radiographic room setup, perfectly harmonizing with your workflow. Designed with the operator's convenience and the patient's comfort in mind, the system delivers excellent performance and user experience.



PBT-4 Essential

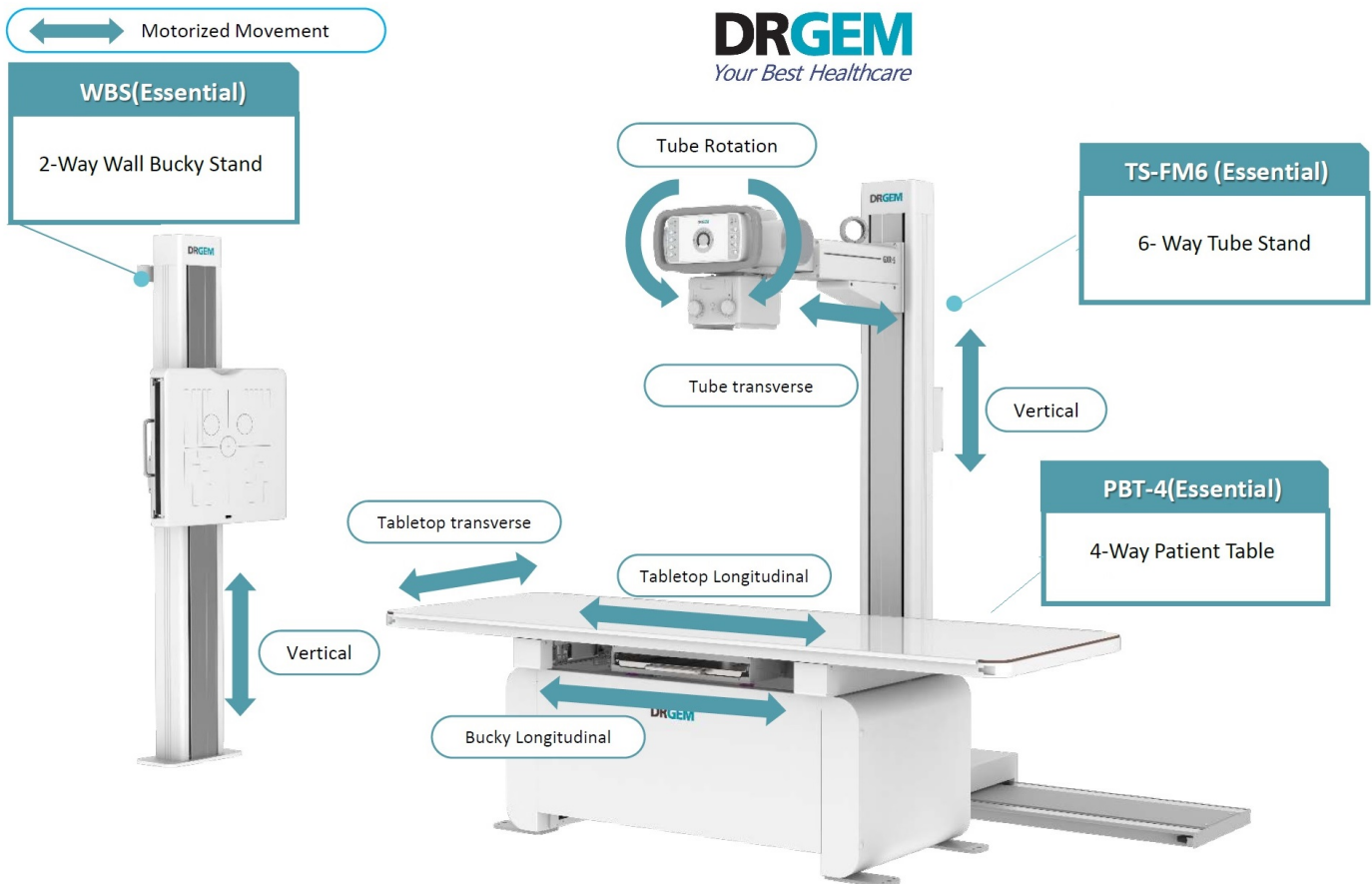
4 way table top Patient Table Built-in generator

The system is equipped with a high-frequency X-ray generator, ensuring consistent delivery of high-quality X-ray output with minimal kV ripple and precise mA & mAs.

Generator Model	GXR-E40
Power Rating	40kW
Line Power	200–240V~ ± 10% (Frequency: 50/60Hz)
kV Range	40~125kV, 1kV step
mA Range	10 to 500mA
Timer Range	0.001 to 10 sec, 38 steps
AEC Shortest Irradiation Time	1ms
mAs Range	0.1 to 320mAs (Optional 500mAs)
Max. Power Output	500mA@80kV / 400mA@100kV / 320mA@125kV
Rotor Supply	Low Speed
Anatomical Programs	User programmable max 1,280 programs with APR utility software (Including Bucky & AEC selection)
Technique Selection	4 point display(kV, mA, Time, mAs)
Image Receptors	2 Bucky + 1 Non-Bucky
Dimension / Weight	805(W) x 449(D) x 352(H)mm / 65kg(143.3lbs)

*“GXR-E40S” is the model name of the Diagnostic X-ray System, and “PLUS” is the option name of the GXR-E40S

Floor Mounted System



Generator Control

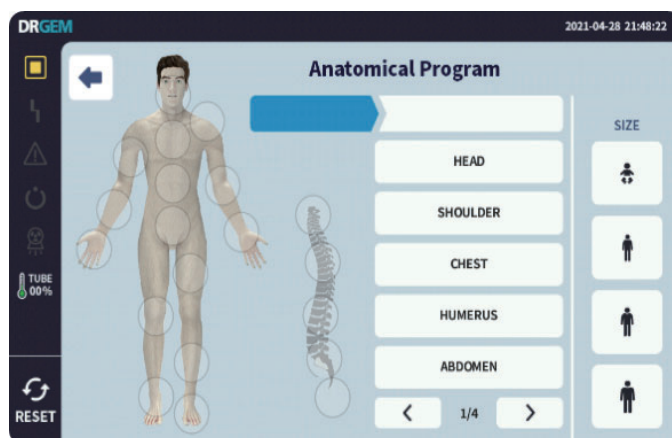
The operator control console is intuitively designed for user-friendly operation.



Touch Console

User APR

Graphical user interface for APR (Anatomic Programming Radiography), providing versatility for users.



It can be easily upgraded to a DR system through the DR interface and PC interface in the generator, along with the Bucky compatible with FPD (Flat Panel Detector).

Detector Options:

- Mano 4336 or 4343 Wireless/Wired
- Offers Full Integration to Generator
- Full Featured Imaging Software
- Excellent Digital Image Quality
- DICOM 3.0 Compliant

- LG 14x17 or 17x17 Wireless/Wired
- Full Featured AWS Imaging Software
- Excellent Digital Image Quality
- DICOM 3.0 Compliant

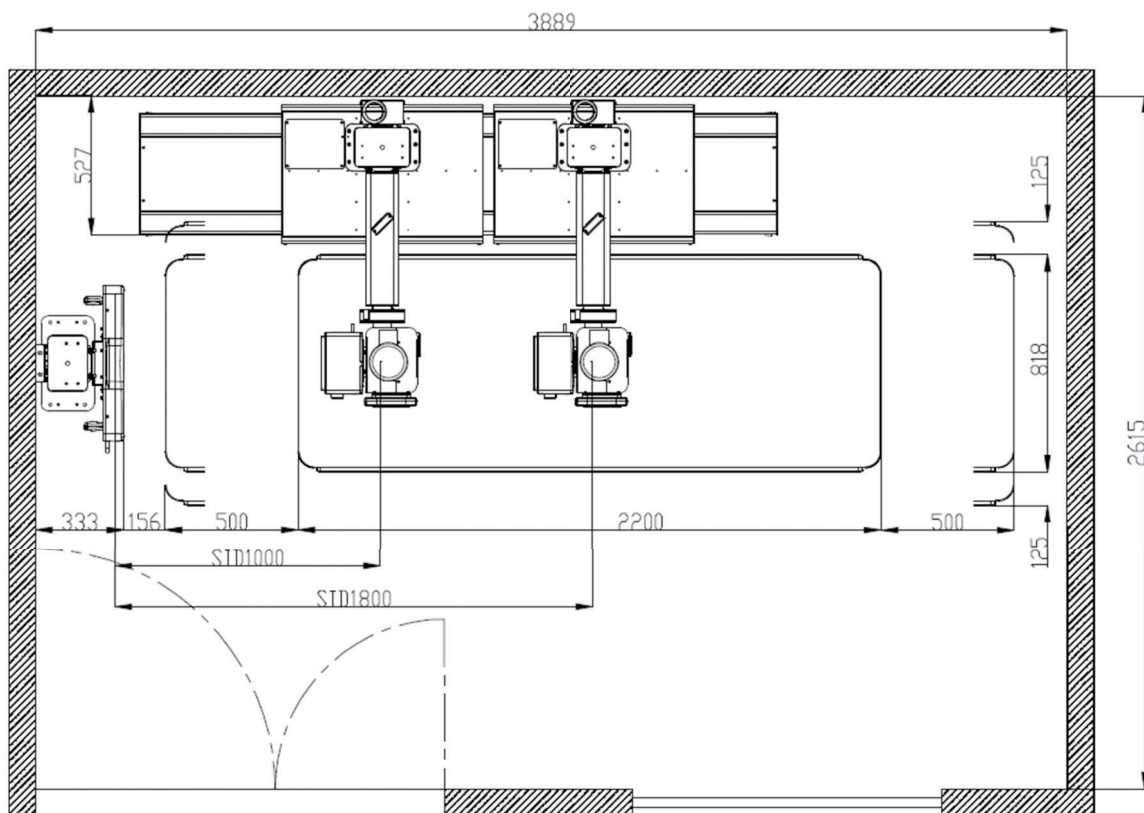


Other Options

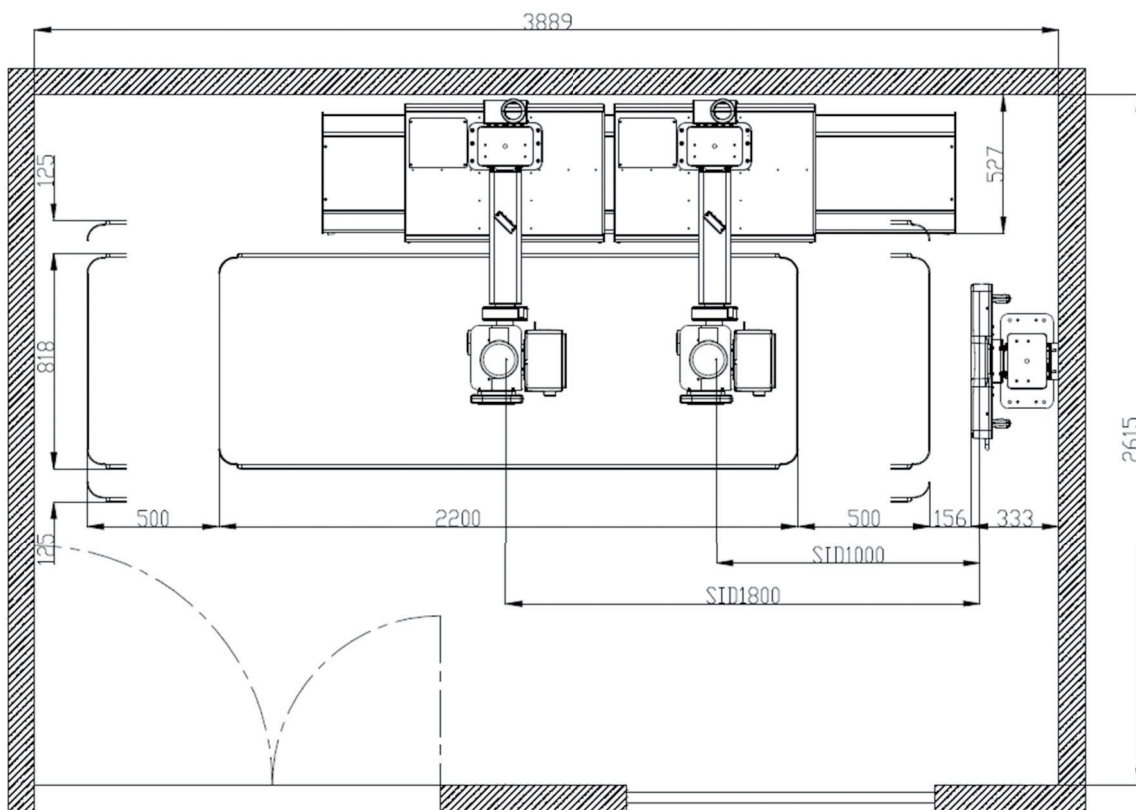
- AEC (Automatic Exposure Control)
- DAP (Dose Area Product) Meter

Effective Room Layout

- Minimum space (3889mm(W) x 2615mm(D) x 2100mm(H))
- Save space by putting the generator under the table
- Minimum room size provided for chest exposure



Left side Wall Bucky



Right side Wall Bucky

DRGEM

Your Best Healthcare

©DRGEM Corporation - All rights reserved.
Reproduction in whole or in part is prohibited without the written consent of the copyright-holder.

Specifications and features are subject to change without notice.
All changes will be in compliance with regulations governing manufacture of medical equipment.

Address

Head Office/R&D 7F,E-B/D Gwangmyeong Techno-Park, 60 Haan-ro, Gwangmyeong-si, Gyeonggi-do, Korea (14322)
Gumi Factory 116-59, Sanho-daero, Gumi-si, Gyeongsangbuk-do, Korea (39377)
Gimcheon Factory 213, Saneopdanji-Ro, Eomo-Myeon, Gimchon-Si, Gyeongsangbuk-do, Korea (39536)



Orange Medical Limited
PO Box 2070
Raumati Beach, Paraparaumu 5032
Phone: 0800 990024
Email: sales@orangenz.co.nz
www.orangenz.co.nz



Medspares Pacific Ltd
PO Box 2070 Raumati Beach 5032
Wellington - New Zealand
P: +64 4 299 7610 - F: +64 4 299 2784
e: sales@medspares.co.nz - www.medspares.co.nz