



SonoBook™ 9 VET

Fast • Precise • Cutting-edge

- Auto-ambient adjustment
- WIFI
- Green
- SSD Instant



Never compromise

performance

For **port**





- ✓ *What if* a compact system could be so intuitive that it can be operated without a manual?
- ✓ *What if* a compact system could respond instantly between different modes?
- ✓ *What if* a compact system could operate for an entire work day with only one battery charge?
- ✓ *What if* a compact system could weight as little as 12 lbs?
- ✓ *What if* a compact system could detect ultra-slow velocity $< 2\text{cm/s}$ ting vessel, and also not miss the high velocity $> 40\text{m/s}$ on cardiac?
- ✓ *What if* a compact system could image superficial tissues within 2mm and achieve more than 30cm of depth clearly on larger animal?
- ✓ *What if* a compact system could be applied in every species and every application?

THE SonoBook™ 9 VET is the answer.

Small O

H

Ultra

- Ultra-Light < 12 lbs(with battery)
- Ultra-Slim
- Ultra-compact
- Ultra-deep penetration > 30cm
- Ultra-superficial observation < 2mm
- Ultra-slow velocity detection < 2mm/s
- Ultra-high velocity detection > 40m/s (probe-dependent)

Faster

- About 1min
- Shut down < 12s
- Still image and cine can be saved in 1s
- Instant switch between different modes & measurements

Wider

- Versatile solutions
- Covering wide frequency range
- 192 elements high density probe
- Innovative probe (available)
- Large Storage Size (10 thousands of images and cines)



(D)
Video-Out,



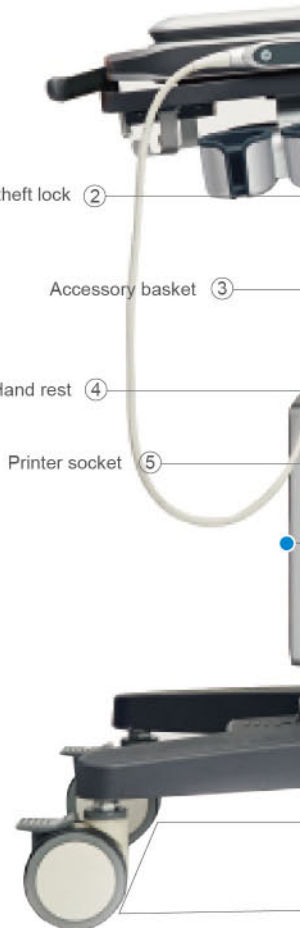
Anti-theft lock ②



Hand rest ④

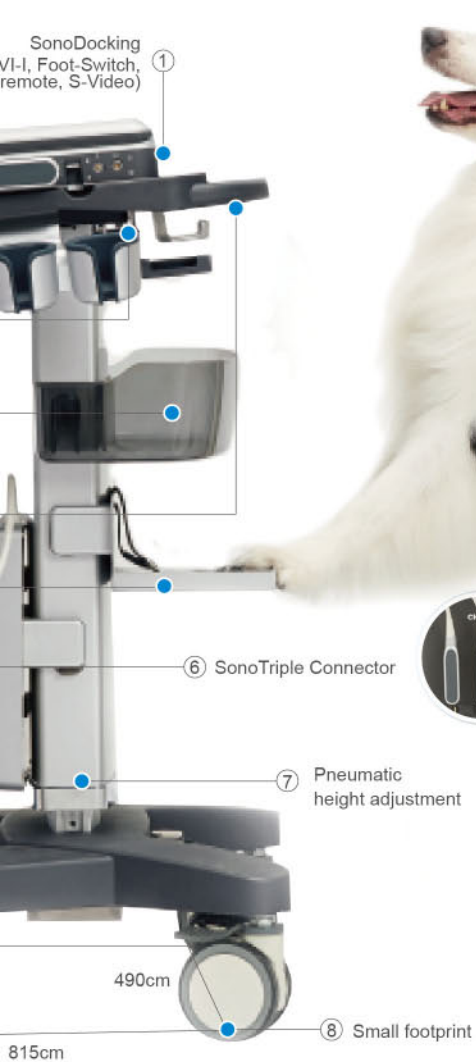
Accessory basket ③

Printer socket ⑤



outside

huge Inside



More Connectable

- Intelligent patients' data management
- SonoDocking: DVI-I, Foot-Switch, Video-Out, remote, S-Video
- USB3.0
- Wifi-Compatible
- DICOM: Structure report, worklist, storage, print

Smarter

- AIO (Automatic Image Optimization for B mode & D mode)
- Auto Measurement: Auto IMT, Auto NT, Auto -trace for PW
- User-defined workflow
- Auto-ambient adjustment tailor to indoor & outdoor uses.

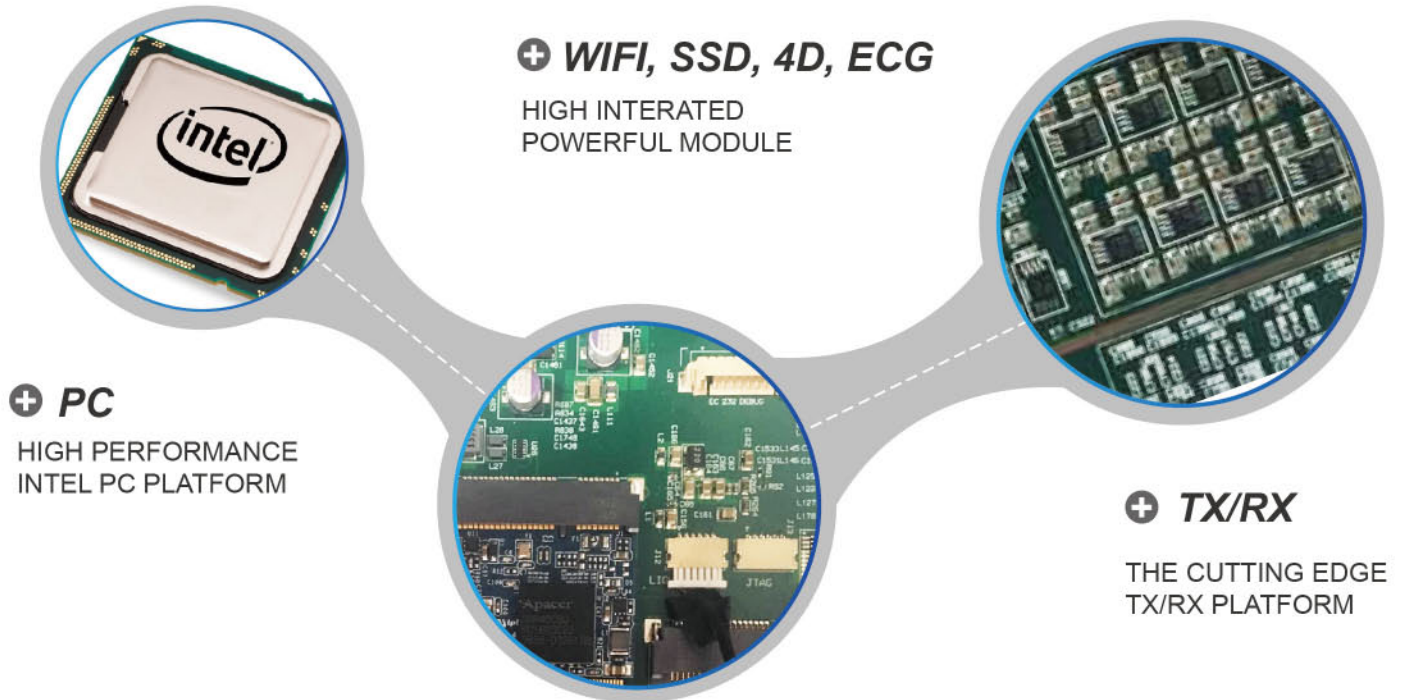
Greener

- SSD for lower power consumption
- Standby mode to save energy
- Auto-ambient adjustment to save battery life
- Low heat and noise design
- Up to 1 week battery life in standby mode
- Up to 2 hours of continuous use in active mode



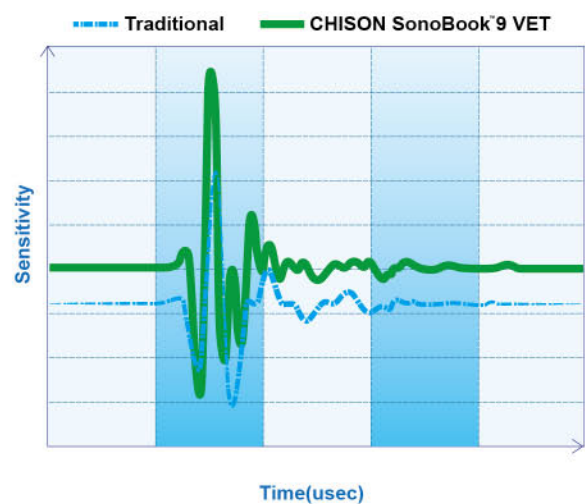
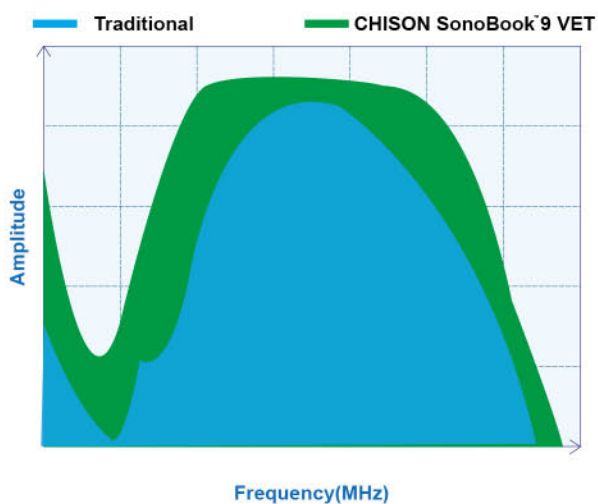
Multipurpose suitcase: either as your backpack, or as carrying case.

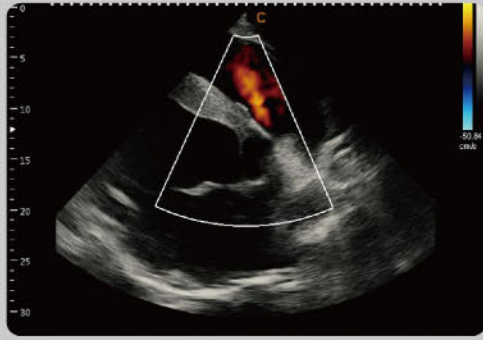
High-Performance Architecture



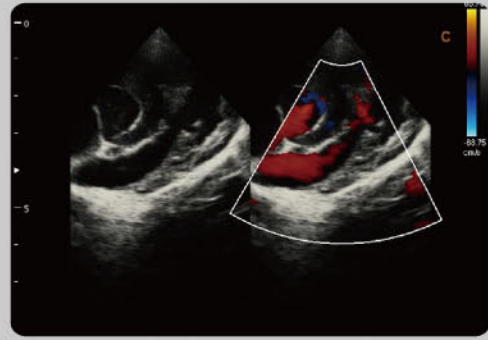
Advanced Transducer Technologies

- SonoBook™9 VET uses the latest advances in transducer technology, which has wider bandwidth, higher sensitivity and better signal-noise ratio, providing superb anatomic details to users delivering excellent resolution and penetration, especially during large animal scanning.

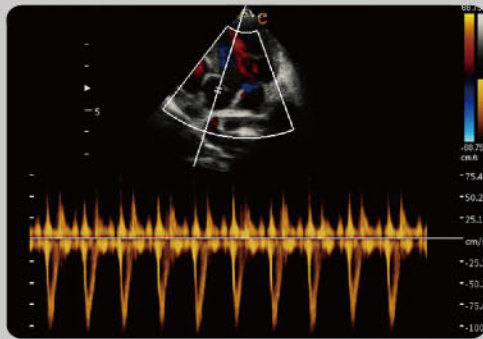




Equine cardiac(31cm Depth), C Mode



Canine cardiac, B/BC Mode



Canine cardiac, PW Mode



Canine Kidney, B Mode



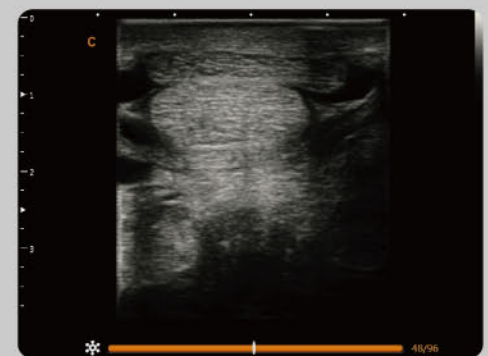
Canine Bladder, B Mode



Canine Intestine, B Mode



Canine Kidney, B Mode



Equine Tendon, B Mode



4.0MHz-12.0MHz Micro-Convex
MC6-V



2.0MHz-6.8MHz Micro-Convex
MC3-V



7.0MHz-18.0MHz (With FHI) Linear
L12-V



4.0MHz-15.0MHz Linear
L8M-V



4.0MHz-15.0MHz Linear
L7-V



5.0MHz-14.0MHz Linear
L8M5-V



4.0MHz-15.0MHz Linear
Rectal
L7V-V



4.0MHz-15.0MHz Trans-Rectal
R7-V



2.0MHz-8.0MHz Phased array
P5-V



1.5MHz-5.3MHz Phased array
P2-V



2.0MHz-6.8MHz Convex
C3-V



6.0MHz-16.0MHz Linear
L10i-V



CHISON Medical Technologies Co., Ltd.

Sales & Service Contact Address:

No.9, Xinhuihuan Road, Xinwu District, Wuxi, Jiangsu, China 214028

TEL : 0086-510-85310593 / 85310937

FAX : 0086-510-85310726

EMAIL : export@chison.com.cn