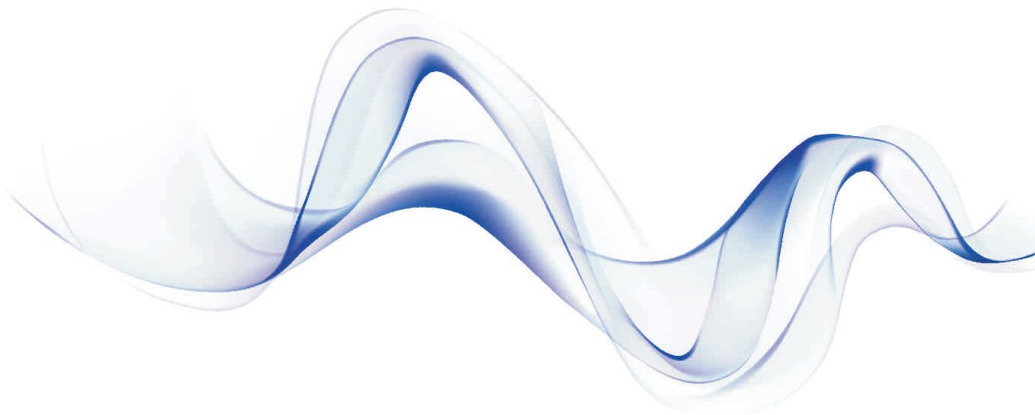




M880 Vet

Handheld Veterinary Monitor



Physical Specifications

Mainframe weight: 500g(full configuration, including the batteries)

Mainframe size: 142mm(W)×78mm(H)×36mm(D)

Environmental Specifications

Temperature: Operating: 5℃ to +40℃

Storage: -20℃ to +55℃

Atmospheric pressure: Operating: 860hPa to 1060hPa

Storage: 500hPa to 1060hPa

Humidity Operating: 15% to 85%(non condensing)

Storage: less than 93%(non condensing)

Charging Specifications

Charger: Micro USB Charge, Data export

Power adapter: Input: AC 100~240V Output: DC 5V/2A

Battery Requirement

Type: Built-in lithium battery

Voltage: 3.7V

Capacity: 4800mAh

Charging time: 3 hours to 90%, 4 hours to 100%

Run time: >18h

Display

Size: 4.3inch

Resolution: 480*272

Touch: Resistive touch

Autorotation Direction: four directions

Indicating Lamp

Alarm indicating: 1(Yellow/Red), on the top of screen.

Battery charging indicating lamp: 1 (orange)

When charged, it lights orange.

When fully charged or not charged, it doesn't light.

Audio Indicating

Speaker: Gives audible alarm, button tone and QRS tone

Supports Pitch Tone and multi-level volume

Buttons

Power button: Turn on/off

Shortcut key: Start/Pause CO2 measurement

Short press to achieve the above function,

long press + power

button to achieve calibration of LCD

Data Storage

Animal ID: 1~96

SpO2 trend interval: 10s、30s、1min、2min、5min、10min

Capacity: 500 groups/animal can be stored

CO2 (Sidestream)

Measurement Way: Infrared spectrum

Measurement Range: 0-19.7%(0-150mmHg or 0-20.0kPa)

CO2 Accuracy:

0%-5.3%(0mmHg-40mmHg)±0.3%(±2mmHg)

5.4%-9.2%(41mmHg-70mmHg), ±5% of reading

9.3%-13.2%(71mmHg-100mmHg);±8% of reading

13.3%-19.7%(101mmHg-150mmHg), ±10% of reading

CO2 Resolution: 0.1mmHg

Gas Flow Rate: 60~80ml/min

Unit: %, mmHg, kPa

Measurement: 3~150 rpm

Measuring accuracy of RR: ±1% or ± 1 rpm, whichever is greater

Response Time: <3s

Calibration: Offset calibration, auto/ manual; gain calibration

CO2 Alarm Range: 0-19.7%(0-150mmHg or 0-20.0kPa)

Alarm Indication: Three levels alarming: Audible-visual alarming.

Blinked data and parameters Text prompts

BLT SpO2

Measurement range: 0~100%

Resolution: 1%

Accuracy: 70~100%: ± 2%

0~69%: unspecified

Alarm: Select the high and low alarm limit of SpO2

Data update period: 13s

Anti-interference: Anti-motion interference

Anti-electrotome interference

Resisting low perfusion capacity

Recovery time of equipment afterdefibrillation: 5s

Pitch Tone: with

PR

Measurement range: 25 bpm ~250 bpm

Resolution:1bpm

Accuracy: ±1% or ± 1 bpm, whichever is greater

Alarm: Select the high and low alarm limit of PR

Standard Configuration

EtCO2, Respiration Rate

Option

SpO2, Pulse Rate

The brochure may be revised or replaced by BIOLIGHT at any time without notice.

M880 Vet-z1807-01

Guangdong Biolight Meditech Co., Ltd.

Add: NO.2 Innovation First Road, Technical Innovation Coast, Hi-tech Zone, Zhuhai, P. R. China, Postcode: 519085

Tel: +86-756-3399935 Fax: +86-756-3399911 E-Mail: overseas@blt.com.cn www.blt.com.cn

